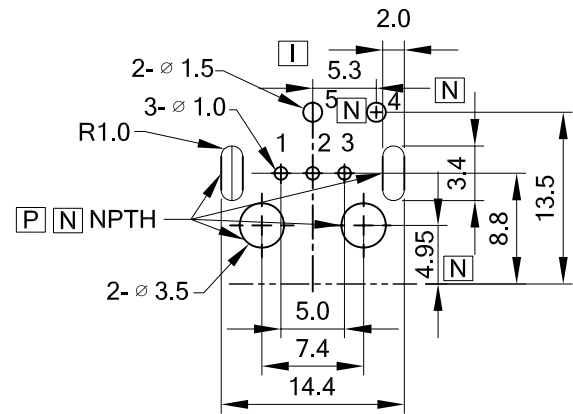
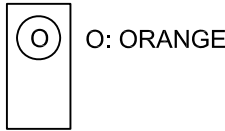


ORDER INFORMATION:
 PJPOF-141-O-X
 I DOOR OPTION
 A= DUST CAP PLUG
 B= DUST CAP HINGED DOOR
 RCA JACK COLOR OPTION:
 O: ORANGE
 TOOLING FAMILY

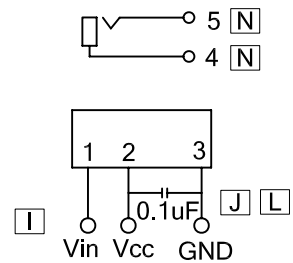


COLOR LAYOUT



R	REVISE LOGO	Vegas	9/16/09'
Q	CHANG THE GATE MATERIAL WAS UL94V-2	Vegas	9/11/09'
P	ADD DIMENSION & NPTH OF PCB	Kevin	9/9/09'
O	CHANGE THE DOOR TYPE AND REVISE PCB LAYOUT	Vegas	8/28/09'
N	ADD "PJPOF-141-O-B" DRAWING REVISE DRAWING	Vegas	7/20/09'
M	CORRECT DIMENSIONS AND TOLERANCE CORRECT PLUG MATERIAL WAS NY66	Vegas	4/24/09'
L	CORRECTED DIM., THICKNESS, TYPO. AND TOL. AND PCB LAYOUT, ADD GTI LOGO	AXL	2/23/09'
K	REVISE SCREW HOLE WAS ∅2.4 REVISE NOTES 5,4	Vegas	11/27/08'
J	ADD NOTES 8 DOOR CYCLING SPEC. CORRECT TYPO. WAS uF ON CIRCUIT REVISE NO. 1 AND 9 BOM MATERIAL	AXL	4/9/07'
I	CORRECT DWG, ADD NOTES 7 DOOR OPTION AND PIN OUT	AXL	3/8/07'
H	CHANGE DOOR COLOR WAS PINK	AXL	2/23/07'
G	REVISE RESIN WAS PBT	AXL	2/19/07'
F	REVISE RESIN WAS ABS	AXL	1/30/07'
E	CORRECT SPECIFICATION 5.4	AXL	11/22/06'
D	CHANGE TO DOOR FEATURE	AXL	11/10/06'
C	ADD NOTES AND SHEET	AXL	9/25/06'
B	ADD ORDER INFO.	AXL	7/10/06'
A	ISSUED	Kevin	06/28/06'
REV	ECN NO.	NAME	DATE

Circuit Diagram(AV)



Dimensions of PC board holes(Recommend) TOP VIEW Tolerance ±0.05mm

No.	Name	QTY	Material	Coat Cladding Material
9	Outer Conductor	1	H65 Brass t=0.4(M)	Tin 0.2um over CuSn 1-3um
8	Washer (ORANGE)	1	PBT + 15 % Glass Filled	UL 94V-0
7	Shield Patch	1	H62 Brass t=0.25	Tin 0.2um over CuSn 1-3um
6	Optic-Fiber Contact Pin	3	H62 Brass t=0.25	D.Ag
5	Ground terminal	1	H62 Brass t=0.4	Tin 0.2um over CuSn 1-3um
4	Center terminal	1	H62 Brass t=0.5	Tin 0.2um over CuSn 1-3um
3	Base(1) (BLACK)	1	PBT + 15 % Glass Filled	UL 94V-0
2	Base(2) (BLACK)	1	PBT + 15 % Glass Filled	UL 94V-0
1	PLUG (BLACK)	1	PBT + 15 % Glass Filled	UL 94V-0

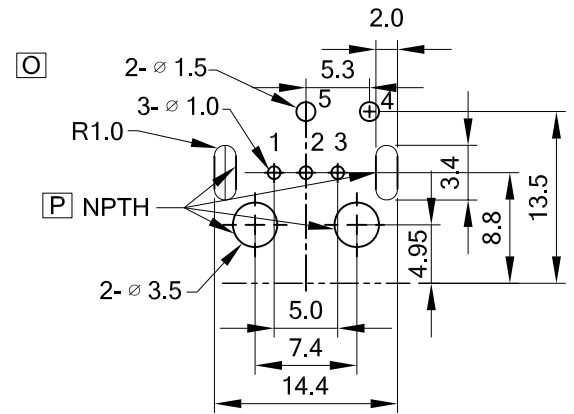
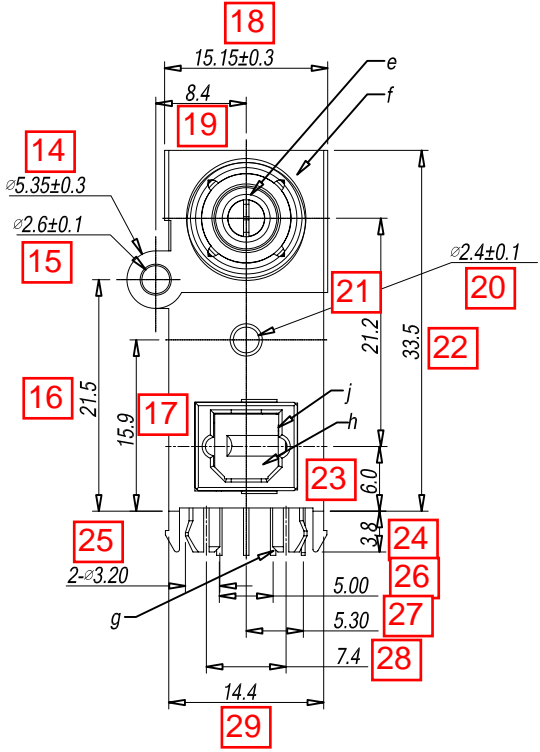
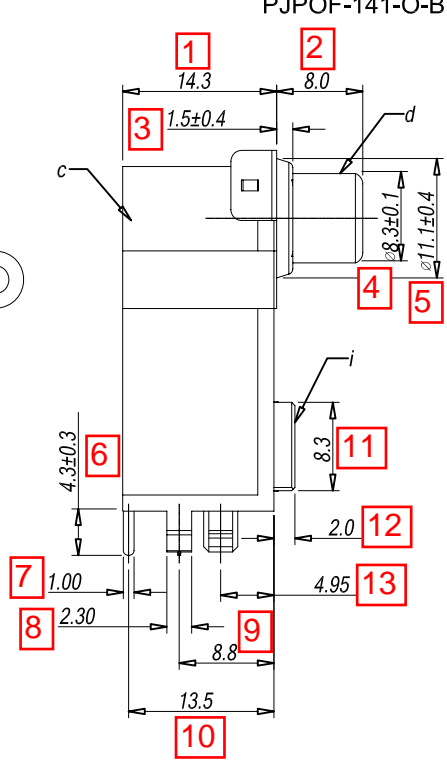
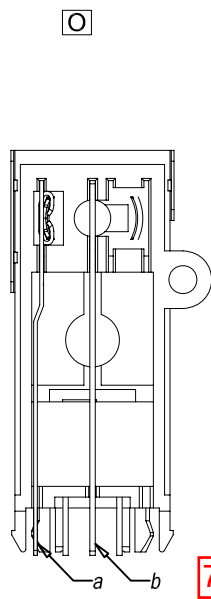
TOLERANCE	
LINEAR	ANGLES
< 6 ± 0.2	X° ±
6~20 ± 0.30	.X° ±
> 20 ± 0.40	.XX° ±
	.XXX° ±



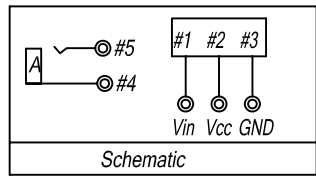
TITLE: RCA PIN JACK + POF CONNECTOR			
PART NO.		PJPOF-141-O-X	
DWG NO.		SC-20025	
UNITS	SCALE	SHEET	REV
MM	NONE	1 OF 4	R

APPD:	MAT'L:
CHKD:	FINISH:
DRWN: AXL	Q'TY:

PJPOF-141-O-B

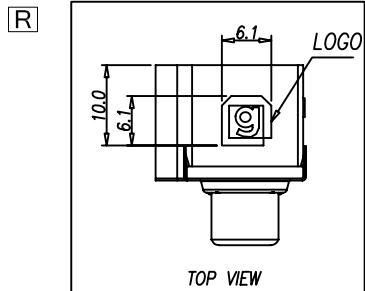
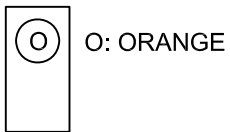


Dimensions of PC board holes(Recommend)
TOP VIEW Tolerance ±0.05mm



Q	j	Spring	1	Steel		
	i	Frame	1	PA66+30%G.F UL94V-0	Black	
	h	Gate	1	PA66+30%G.F UL94V-0	Black	
	g	ODL	1	16Mbps		
	f	Shielding Plate	1	Brass, T=0.25mm(H62)	CuSn Plating(80u")	
	e	Washer	1	PBT+15%G.F UL94V-0	See Color Scheme	
	d	Outer Contact	1	Brass, T=0.4mm(H65)	CuSn Plating(80u")	
	c	Housing	1	PBT+15%G.F UL94V-0	Black	
	b	Terminal #5	1	Brass, T=0.5mm(H62)	CuSn Plating(80u")	
	a	Terminal #4	1	Brass, T=0.4mm(H62)	CuSn Plating(80u")	
	NO.	PART NAME	Q'TY	MATERIAL	PLATING & COLOR	Remark

COLOR LAYOUT



TOLERANCE		 1015 GRANT STREET S.E. ATLANTA, GA 30315 a Genesis Electro-Mechanical Company		TITLE: RCA PIN JACK + POF CONNECTOR			
LINEAR	ANGLES			PART NO.	PJPOF-141-O-X		
X. ±	X° ± 2°	APPD:	MAT'L:	DWG NO.	SC-20025		
X ± 0.5	.X° ± 1°	CHKD:	FINISH:	UNITS SCALE SHEET REV MM NONE 2 OF 4 R			
X.X ± 0.3	.XX° ±	DRWN: VEGAS	Q'TY:				
X.XX ± 0.2	.XXX° ±						

C NOTES:

1. Scope

This specs is suitable for AV pin jack and Fiber Optic combination products, which is suitable for input/output of audio/video signal, used as connection part. the fiber optic part conforms to EIAJ Standard CP-1201(For digital audio interfaces including fiber optic inter-connections), The fiber optic is TTL interface and it's LED is driven by differential circuit.

2. Construction

The external dimensions of this product and its internal tolerances are based on relevant drawings.

3. Materials

Refer to the materials film-processing the drawing specifies.

4. Applied environment

- (1) Temperature: -40~70°C
- (2) Relative humidity: <90% (40°C)
- (3) PH value: PH6~8

5-1. MAXIMUM RATING (Ta=25°C)

Parameters	Symbol	Rating	Unit
Storage Temperature	Tstg	-40~+70	°C
Operating Temperature	Topr	-20~+70	°C
Supply Voltage	V _{CC}	-0.5~+7.0	V
Input Voltage	V _{IN}	-0.5~V _{CC} +0.5	V
Soldering Temperature	T _{SOL}	260(1)	°C

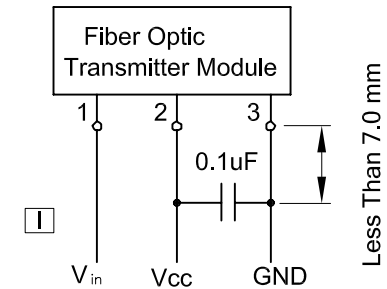
(*1) Soldering Time ≤ 10 Seconds (At a distance of 1 mm from the package)

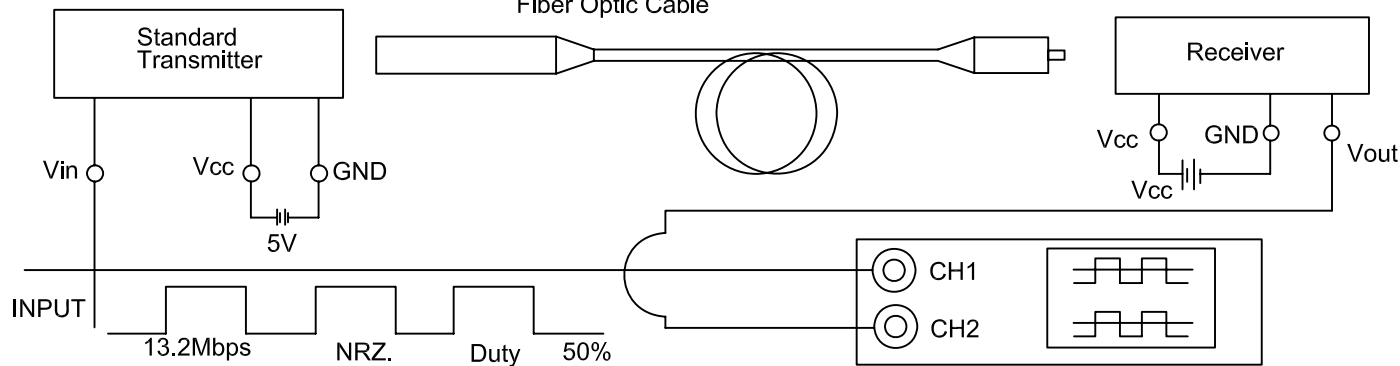
5-2. RECOMMENDED OPERATING CONDITIONS

Parameters	Symbol	MIN.	TYP.	MAX.	Unit
Supply Voltage	V _{CC}	4.75	5.0	5.25	V
High Level Input Voltage	V _{HK}	2.0	-	V _{CC}	V
Low Level Input Voltage	V _{IL}	0	-	0.8	V

5-3. Mechanical Characteristics (Ta=25°C, V_{CC} = 5V)

Parameters	Symbol	Condition	MIN	TYP.	MAX.	Unit
Insertion Force		Using TOCP172, Initial Value	DC	-	6	Mb/s
Withdraw Force		Using TOCP172, Initial Value				





[K] 5-4. Electrical and Optical Characteristics (Ta=25°C, Vcc=5V)

Parameters	Symbol	Condition	MIN.	TYP.	MAX.	Unit
Data Rate		NRZ Code(2)	DC	-	6	Mb/s
Transmission Distance		Using APF(9) and TORX178B				
Pulse Width Distortion(4)	Δt_w	Pulse Width= 165 ns Pulse Cycle= 0 ns Using TORX178B $C_L = 10$ pF	-30	-	30	Ns
Fiber Optic Power(5)	Pf		-21	-	-15	dBm
Peak Emission Wavelength	λ_p		-	660	-	Nm
Current Consumption	Icc		-	13	20	Ma
High Level Input Voltage	V _{IH}		2.0	-	-	V
Low Level Input Voltage	V _{IL}		-	-	0.8	V

[E]

Note (*2): LED in on when input signal is high. and off when it is low.

The duty factor must be maintained between 25 to 75%

(*3): All Plastic Fiber (970/1000 um)

(*4): Between input of TOTX178A and output of fiber optic receiving module.

(*5): Measure with a standard optical fiber. peak value.

6. RCA PIN JACK

1. ELECTRICAL:

- A. DIELECTRIC STRENGTH: AC 500V FOR 1 MINUTE.
- B. CONTACT RESISTANCE: 20 MILLIMOHMS MAX..
- C. INSULATION RESISTANCE: 100 MEGAOHMS MIN.

2. RoHS COMPLIANT.

[I] 7. RECOMMENDED TEMPERATURE FOR SOLDER PROCESS:
MATERIAL: PBT + 15% GLASS FILLED

SOLDER CONDITION	TEMPERATURE
LEAD PROCESS	225 °C, 3 ~ 5 SECONDS
LEAD FREE PROCESS	225 °C, 3 ~ 5 SECONDS
HAND SOLDER PROCESS	225 °C, 3 ~ 5 SECONDS

[J] 8. DOOR CYCLING SPECIFICATION (OPEN / CLOSE) = 50 CYCLES.

SHEET	REVISION
4 OF 4	SEE SHEET 1

GENESIS

FIRST ARTICLE INSPECTION DATA

This section is filled out by Custome

Part Number		Contact Name	
Part Description		Address	
Part Rev			
Date Submitted / Date Due		City, State, Zip, Country	
Project Name		Phone Number	
APC code	Project Number	Fax Number	
File name		E-mail	

This section is filled out by Supplier

Supplier Part Number		Supplier Name	
Supplier Part Description		Supplier Number	
Tool Serial Number		Contact Name	
Cavity Number		Address	
Tool Type			
Manufacturing Location		City, State, Zip, Country	
Inspected by		Phone Number	
Date		Fax Number	
		E-mail	

Notes:

Dimension #	DIMENSION LOCATION	DIMENSION VALUE	Inspection Method	UPPER TOLERANCE	LOWER TOLERANCE	USL	LSL	XBAR-R DIM?	CRITICAL DIM?	sample 1	sample 2	sample 3	STATISTICS					Notes
													MAX	MIN	MEAN	CP	CPK	
1		14.3000	cal	0.300	0.300	14.600	14.000			14.2200	14.2500	14.2400	14.250	14.220	14.237	6.55	5.16	
2		8.0000	cal	0.300	0.300	8.300	7.700			7.9900	7.9500	7.9800	7.990	7.950	7.973	4.80	4.38	
3		1.5000	cal	0.400	0.400	1.900	1.100			1.2200	1.3400	1.3100	1.340	1.220	1.290	2.14	1.01	
4		8.3000	cal	0.100	0.100	8.400	8.200			8.2800	8.2900	8.2800	8.290	8.280	8.283	5.77	4.81	
5		11.1000	cal	0.400	0.400	11.500	10.700			10.8200	11.0300	11.0100	11.030	10.820	10.953	1.15	0.73	
6		4.3000	cal	0.300	0.300	4.600	4.000			4.2600	4.3100	4.3000	4.310	4.260	4.290	3.78	3.65	
7		1.0000	cal	0.200	0.200	1.200	0.800			1.1100	1.1000	1.1000	1.110	1.100	1.103	11.55	5.58	
8		2.3000	cal	0.200	0.200	2.500	2.100			2.2700	2.3000	2.2900	2.300	2.270	2.287	4.36	4.07	
9		8.8000	cal	0.300	0.300	9.100	8.500			8.5500	8.7500	8.7100	8.750	8.550	8.670	0.94	0.54	
10		13.5000	cal	0.300	0.300	13.800	13.200			13.2900	13.2800	13.3000	13.300	13.280	13.290	10.00	3.00	
11		8.3000	cal	0.300	0.300	8.600	8.000			8.1600	8.1700	8.1600	8.170	8.160	8.163	17.32	9.43	
12		2.0000	cal	0.300	0.300	2.300	1.700			1.9500	2.0100	1.9800	2.010	1.950	1.980	3.33	3.11	
13		4.9500	cal	0.200	0.200	5.150	4.750			4.9000	4.9600	5.0000	5.000	4.900	4.953	1.32	1.30	
14		5.350	cal	0.300	0.300	5.650	5.050			5.3900	5.3200	5.3300	5.390	5.320	5.347	2.64	2.61	
15		2.600	cal	0.100	0.100	2.700	2.500			2.6000	2.6000	2.6000	2.600	2.600	2.600	#DIV/0!	#DIV/0!	
16		21.500	cal	0.300	0.300	21.800	21.200			21.6200	21.5800	21.5600	21.620	21.560	21.587	3.27	2.33	
17		15.900	cal	0.300	0.300	16.200	15.600			15.7900	15.7900	15.7900	15.790	15.790	15.790	#DIV/0!	#DIV/0!	
18		15.150	cal	0.300	0.300	15.450	14.850			15.3500	15.3200	15.3300	15.350	15.320	15.333	6.55	2.55	
19		8.400	cal	0.300	0.300	8.700	8.100			8.2500	8.1600	8.1900	8.250	8.160	8.200	2.18	0.73	
20		2.400	cal	0.100	0.100	2.500	2.300			2.3300	2.3600	2.3500	2.360	2.330	2.347	2.18	1.02	
21		21.200	cal	0.300	0.300	21.500	20.900			21.2400	20.9300	20.9400	21.240	20.930	21.037	0.57	0.26	
22		33.500	cal	0.300	0.300	33.800	33.200			33.5200	33.4800	33.7600	33.760	33.480	33.587	0.66	0.47	
23		6.000	cal	0.300	0.300	6.300	5.700			5.9300	6.0300	5.9800	6.030	5.930	5.980	2.00	1.87	
24		3.800	cal	0.300	0.300	4.100	3.500			3.8100	3.8100	3.8000	3.810	3.800	3.807	17.32	16.94	
25		3.200	cal	0.200	0.200	3.400	3.000			3.1800	3.1800	3.1800	3.180	3.180	3.180	#DIV/0!	#DIV/0!	
26		5.000	cal	0.200	0.200	5.200	4.800			4.9600	4.9000	4.9300	4.960	4.900	4.930	2.22	1.44	
27		5.300	cal	0.200	0.200	5.500	5.100			5.1100	5.2100	5.2400	5.240	5.110	5.187	0.98	0.42	
28		7.400	cal	0.300	0.300	7.700	7.100			7.2900	7.2700	7.2900	7.290	7.270	7.283	8.66	5.29	
29		14.400	cal	0.300	0.300	14.700	14.100			14.3500	14.3100	14.3300	14.350	14.310	14.330	5.00	3.83	

Inspection Method Is	
Calipers	Cal
Micrometer	Mic
Optical	Opt
Radius gauge	Rad
coordinate measuring machine	CMM

Notes:
