

GTI NO. :G00189

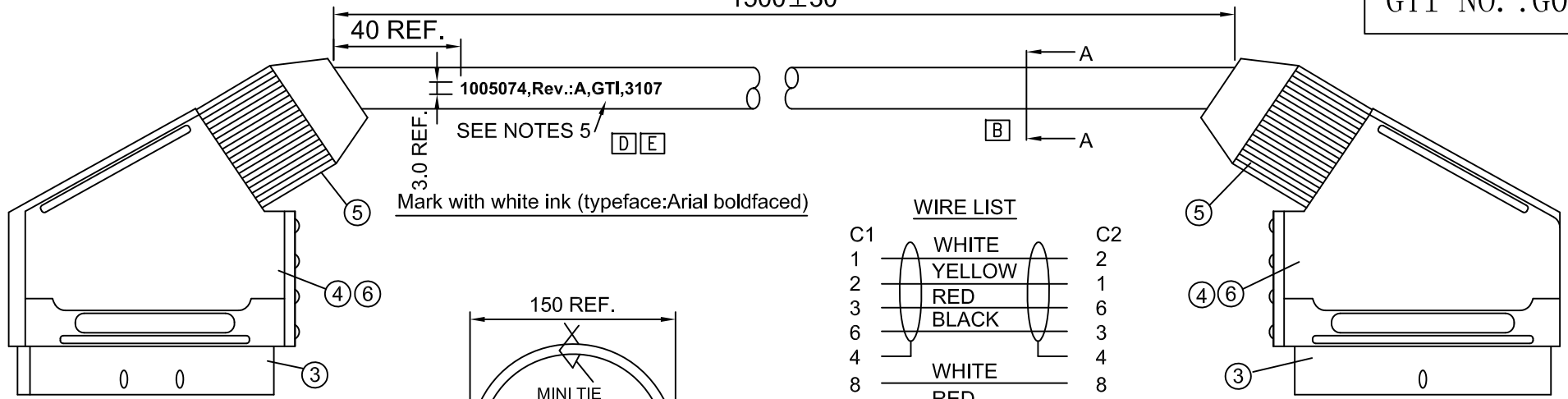
1500±30

40 REF.

1005074, Rev.:A, GTI, 3107

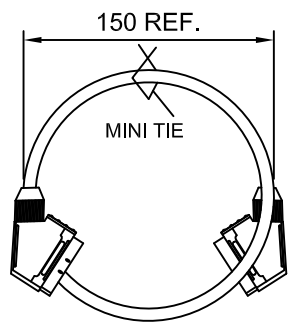
SEE NOTES 5

Mark with white ink (typeface:Arial boldfaced)

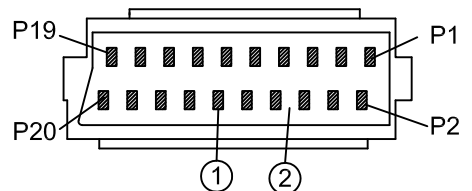


WIRE LIST

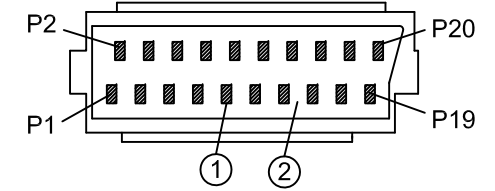
| | | | | |
|-------|----|--------|-------|----|
| C1 | 1 | WHITE | C2 | 2 |
| | 2 | YELLOW | | 1 |
| | 3 | RED | | 6 |
| | 6 | BLACK | | 3 |
| | 4 | | | 4 |
| | 8 | WHITE | | 8 |
| | 10 | RED | | 10 |
| | 12 | YELLOW | | 12 |
| | 5 | | | 5 |
| | 7 | YELLOW | | 7 |
| | 9 | | | 9 |
| | 11 | GREEN | | 11 |
| | 13 | | | 13 |
| | 15 | BLACK | | 15 |
| | 14 | | | 14 |
| | 16 | WHITE | | 16 |
| | 17 | | | 18 |
| | 19 | RED | | 20 |
| | 18 | | | 17 |
| | 20 | BLUE | | 19 |
| | | DRAIN | | |
| SHELL | | | SHELL | |



PACKAGE



C1



C2

NOTES:
 1. CABLE:NON-UL 28AWG
 {{{(7/0.12BC+28/0.12BC Spiral)*2Coax+(7/0.12BC+28/0.12BC Spiral)*4Coax+
 (7/0.12BC*4C+7/0.16TC D.W+AL/FOIL)*1C+7/0.12BC*3C+7/0.16TC D.W+AL/FOIL}}*1C
 JACKET :PVC OD:Ø10.5±0.2 COLOR: BLACK
 2.TESTING:
 (1) 100%TEST OPEN SHORT AND MISWIRE.
 (2) INSULATION RESISTANCE: 5M ohm min.
 (3) CONDUCTOR RESISTANCE: 3 ohm MAX.
 (4) HI-POT:200V DC.
 3.RoHS COMPLIANT.
 4.CABLE SHALL COMPLY WITH EUROPEAN STD
 EN 50049-1:1997 AND AMENDMENT A1:1998.
 5.MARK SA P/N REV,VENDOR ID AND DATE CODE.
 DATE CODE EXAMPLE:31 07
 YEAR:2007
 WEEK:31st

| | | | |
|-----|-----------------------|-------|---------------------------------------|
| 6 | HEAT SHRINK TUBE | 16+14 | PVC/BLACK,Ø1.0*22(8PCS),Ø3.0*12(7PCS) |
| 5 | SCART 21P/M-SCREW CAP | 2PCS | P.P./BLACK IN COLOR,ID=11.0mm |
| 4 | SCART 21P/M-COVER | 2PCS | P.P./BLACK IN COLOR,ASSEMBLY TYPE |
| 3 | SCART 21P/M-SHELL | 2PCS | STAINLESS STEEL |
| 2 | SCART 21P/M-INSULATOR | 2PCS | P.B.T/BLACK IN COLOR,UL94V-0 |
| 1 | SCART 21P/M-CONTACT | 42PCS | CRIMPING TYPE TIN PLATED |
| NO. | DESCRIPTION | Q'TY | MATERIAL |

| | | | | | |
|-----|--------------------------------------|---------|----------|-----------|--------|
| [F] | CORRECT THE SHELL WAS NICKEL PLATING | Charlie | 4/1/10' | | |
| [E] | REVISE NOTES 5 | JANE | 9/11/07' | TOLERANCE | |
| [D] | ADD NOTES 4 AND 5 | JANE | 11/14/06 | LINEAR | ANGLES |
| [C] | CORRECT WIRE LIST | JANE | 11/6/06' | X.± | X'.± |
| [B] | ADD SHEET 2 AND REVISE WIRE LIST | JANE | 11/1/06' | .X±0.25 | .X'± |
| [A] | ISSUED | JANE | 10/17/06 | .XX±0.15 | .XX'± |
| REV | ECN NO. | NAME | DATE | .XXX±0.05 | .XXX'± |

GENESIS TECHNOLOGY, INC
 a Genesis Electro-Mechanical Company
 3 Ind Area Guan Lan
 Shenzhen China 518110

| | | | | |
|----------|------------------|-------|--------|-----|
| TITLE: | SCART CABLE ASSY | | | |
| PART NO. | SC-10506 | | | |
| DWG NO. | | | | |
| | UNITS | SCALE | SHEET | REV |
| | MM | NONE | 1 OF 2 | F |

28AWG(7/0.12)BARE COPPER
 COAXIAL INSULATION:LD-PE,
 OD:1.0±0.05mm,COLOR:NATURE.

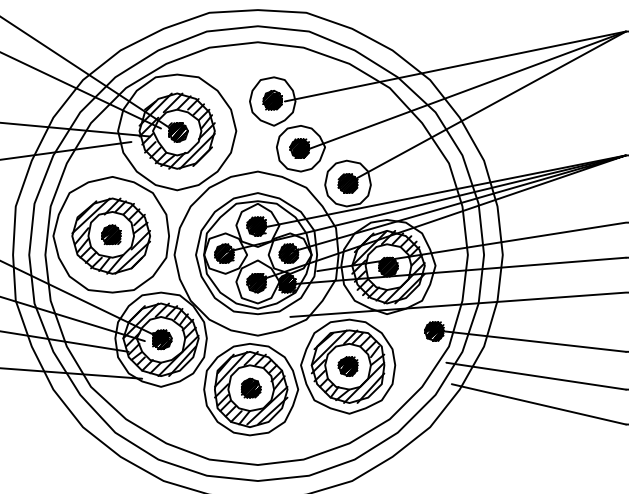
SPIRAL:(28/0.12)BARE COPPER
 COAXIAL JACKET:OD:2.5±0.1mm
 COLOR:RED AND BLUE

28AWG(7/0.12)BARE COPPER
 INSULATION:PVC ,OD:1.0±0.05mm
 SPIRAL:(28/0.12)BARE COPPER
 JACKET:PVC,OD:2.0±0.1mm
 COLOR:YELLOW,GREEN,BLACK,WHITE

28AWG(7/0.12)x3C BARE COPPER
 INSULATION:PVC:OD:0.9±0.05mm
 COLOR:WHITE,YELLOW,RED,BLACK

28AWG(7/0.12)x4C BARE COPPER
 INSULATION:PVC,OD:0.9±0.05mm
 ALUMINUM FOIL
 DRAIN WIRE:TINNED COPPER 26AWG(7/0.16)
 JACKET:PVC,OD:3.5±0.1mm,COLOR:GRAY.

DRAIN WIRE:TINNED COPPER 26AWG(7/0.16)
 ALUMINUM FOIL
 JACKET:PVC,OD:10.5±0.2mm.
 COLOR:BLACK.



A-A SECTION

[B]

| SHEET | REV |
|--------|-------------|
| 2 OF 2 | SEE SHEET 1 |