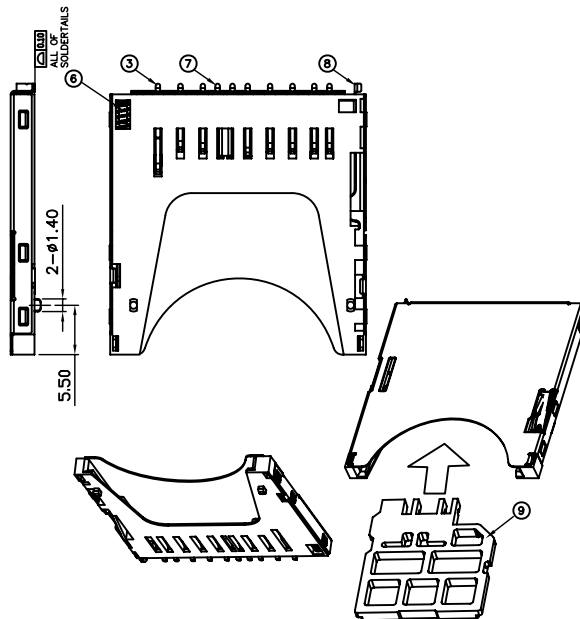


PIN DEFINE

PAD NO.	MEMORY CARD
SD-01	SD-CD/DAT3
SD-02	SD-CMD
SD-03	SD-VSS
SD-04	SD-VDD
SD-05	SD-CLK
SD-06	SD-VSS
SD-07	SD-DAT0
SD-08	SD-DAT1
SD-09	SD-DAT2

ITEM	PARTS NAME	Q'TY	MATERIAL	FINISH/REMARK
1	HOUSING	1	LCP	BLACK
2	SHELL	1	STAINLESS	1u"MIN. GOLD PLATING ON CONTACT TAIL
3	CONTACT-SD	9	PHOSHPOR BRONZE	5u"MIN. GOLD PLATING ON CONTACT AREA 100u"MIN. TIN PLATING 50u"MIN. NICKEL UPDERPLATING OVERALL
4	SLIDER CAM	1	LCP	BLACK
5	CAM PIN	1	STAINLESS	-
6	SPRING	1	SWPB	-
7	DETECT CONTACT	1	PHOSHPOR BRONZE	5u"MIN. GOLD PLATING ON CONTACT AREA 100u"MIN. TIN PLATING
8	PROTECT CONTACT	1	PHOSHPOR BRONZE	50u"MIN. NICKEL UPDERPLATING OVERALL
9	FALSE CARD	1	LCP . PA9T . PA46	BLACK

POSITION OF CARD	WITHOUT CARD	CARD INSERTED WRITE PROTECT : LOCK	CARD INSERTED WRITE PROTECT : UNLOCK
CIRCUIT	WP — GROUND	WP — GROUND	WP — GROUND
	CD — #3	CD — #3	CD — #3



SPECIFICATION
 MATERIAL
 See drawing
 STANDARD DATA
 Rating current:0.5A
 Applicable wire: AWG#26 Max.
 Operating temperature: -25°C ~ +90°C
 Storage temperature: +5°C ~ +35°C
 ELECTRICAL
 Insulator resistance: 1000M ohms Min. @ 500V DC
 Withstanding voltage: 500V AC/minute
 Contact resistance: 100 m ohms Max.
 MECHANICAL
 Mating force: 13.8N(1.4kgf) Max.
 Unmating force: 13.8N(1.4kgf) Max.
 Durability: 10000 cycles Min.
 Contact retention force: 0.98N(0.1kgf) Min

NOTE : SDCR-2309-BK34R1M can read/write the standard MMC 4.0
 NOTE :The max warp is 0.10mmafter reflow

RoHS Compliant

TOLERANCE		GENESIS TECHNOLOGY, INC A Genesis Electro-Mechanical Company	TITLE: 3 IN1 COMBO CONNECTOR								
LINEAR	ANGLES		PART NO. SDCR-2309-BK34R1M								
X. ± 0.50	X° ± 5°	7F, No. 191, Sec. 2 Chung-Yang Rd., Tu-Cheng City, Taipei Hsien, Taiwan	DWG NO. GTI09-25082								
.X ± 0.30	.X° ± 5°		APPD:	MAT'L:	UNITS	SCALE	SHEET	REV			
[A] ISSUED	Vegas	07/04/09	.XX ± 0.20	.XX° ± 5°	CHKD:	FINISH:	MM	NONE	1 OF 2	A	
REV.	ECN NO.	NAME	DATE	.XXX ±	.XXX° ±	DRWN: Kathy-Tan	Q'TY:				

1 2 3 4 5 6 7 8

A

A

B

B

C

C

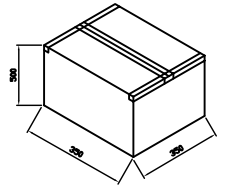
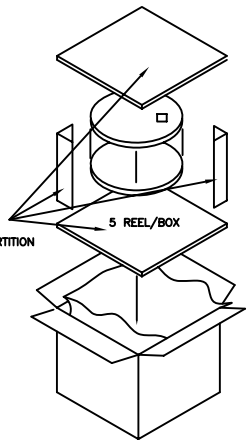
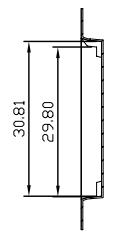
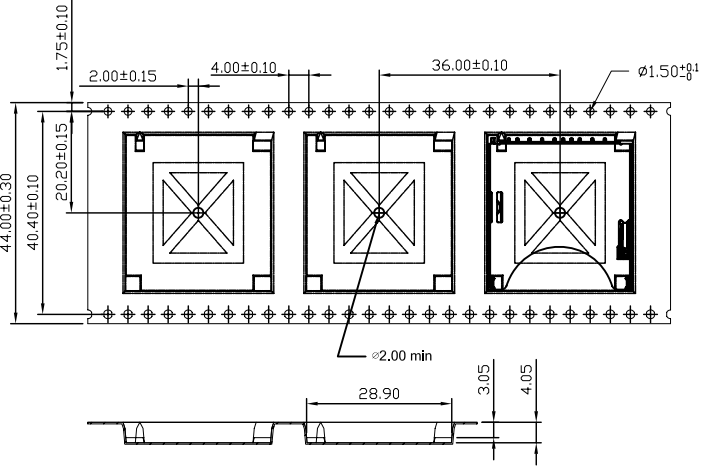
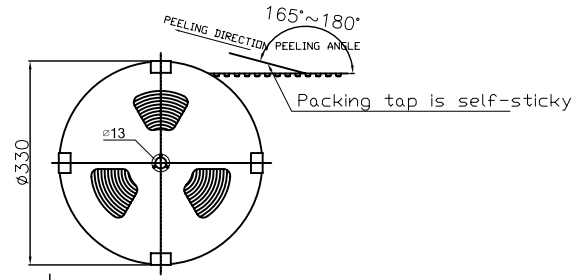
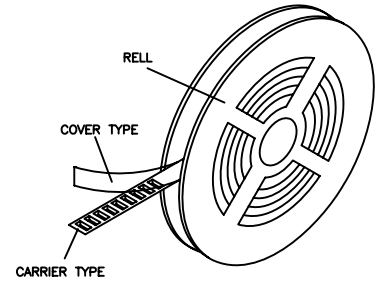
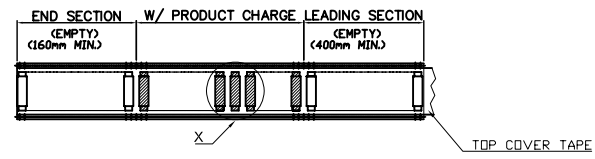
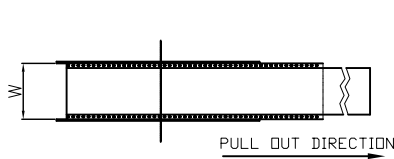
D

D

E

E

1 2 3 4 5 6 7 8



W	44.00±0.30
A0	28.90±0.10
B0	29.8±0.10
K0	4.05±0.10
K1	3.05±0.10

ORDER INFORMATION
 SDCR-23 09 - B K 3 4 R 1M
 ① ② ③ ④ ⑤ ⑥ ⑦ ⑧

- CONNECTOR:
SDCR: SD CARD R/A CONNECTOR
- TYPE:
23: 3 IN 1 COMBO CONNECTOR
- POSITIONS
09: 9 POSTIONS
- INSULATOR MATERIAL
B: LCP
- INSULATOR COLOR
K: BLACK
- CONTACT PLATING
3: GOLD 5u" PLATING
- SHIELD PLATING
4: GOLD FLASH 1u" PLATING
- PACKING
R: TAP REEL PACKING

NOTES
 1.MATERIAL: PS (COLOR: PURE)
 2.DEFORMATION & DAMAGE: NA.
 3.AII DIMENSIONS MEET EIA-481-C REQUIREMENTS.
 4.PACKING: 350 PCS/REEL ; 5 PCS REEL/BOX

PART NO.	SDCR-2309-BK34R1M	SHEET	REV
DWG NO.	GTi09-25082	2 OF 2	SEE SHEET 1